



domus

BRICKELL PARK
MIAMI



ORAL REPRESENTATIONS CANNOT BE RELIED UPON AS CORRECTLY STATING THE REPRESENTATIONS OF THE DEVELOPER. FOR CORRECT REPRESENTATIONS, MAKE REFERENCE TO THIS BROCHURE AND TO THE DOCUMENTS REQUIRED BY SECTION 718.503, FLORIDA STATUTES, TO BE FURNISHED BY A DEVELOPER TO A BUYER OR LESSEE.

NORTH
DEVELOPMENT

¿QUIÉNES SOMOS?

 **EDIFICA**

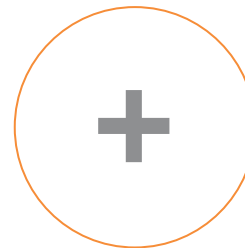
17 AÑOS DE
EXPERIENCIA
EN **PERÚ**

USD 608M
VENTAS EN LOS ÚLTIMOS AÑOS

64
PROYECTOS EN PERÚ

27
EN DESARROLLO
/ CONSTRUCCIÓN

37
PROYECTOS
ENTREGADOS



OAKCAPITAL

35 AÑOS DE
EXPERIENCIA
EN **USA Y BRASIL**

USD 3,000M
VENTAS EN LOS ÚLTIMOS AÑOS

44
PROYECTOS EN USA Y BRASIL

6
EN DESARROLLO
/ CONSTRUCCIÓN

38
PROYECTOS
ENTREGADOS

PERÚ

C. República de Colombia 791 Of. 702
San Isidro, Lima
www.edifica.com.pe

USA

3326 Mary Street Suite 401
Miami, Florida 33133
www.northdevelopment.com

 **941 218 341**
grisco@edifica.com.pe

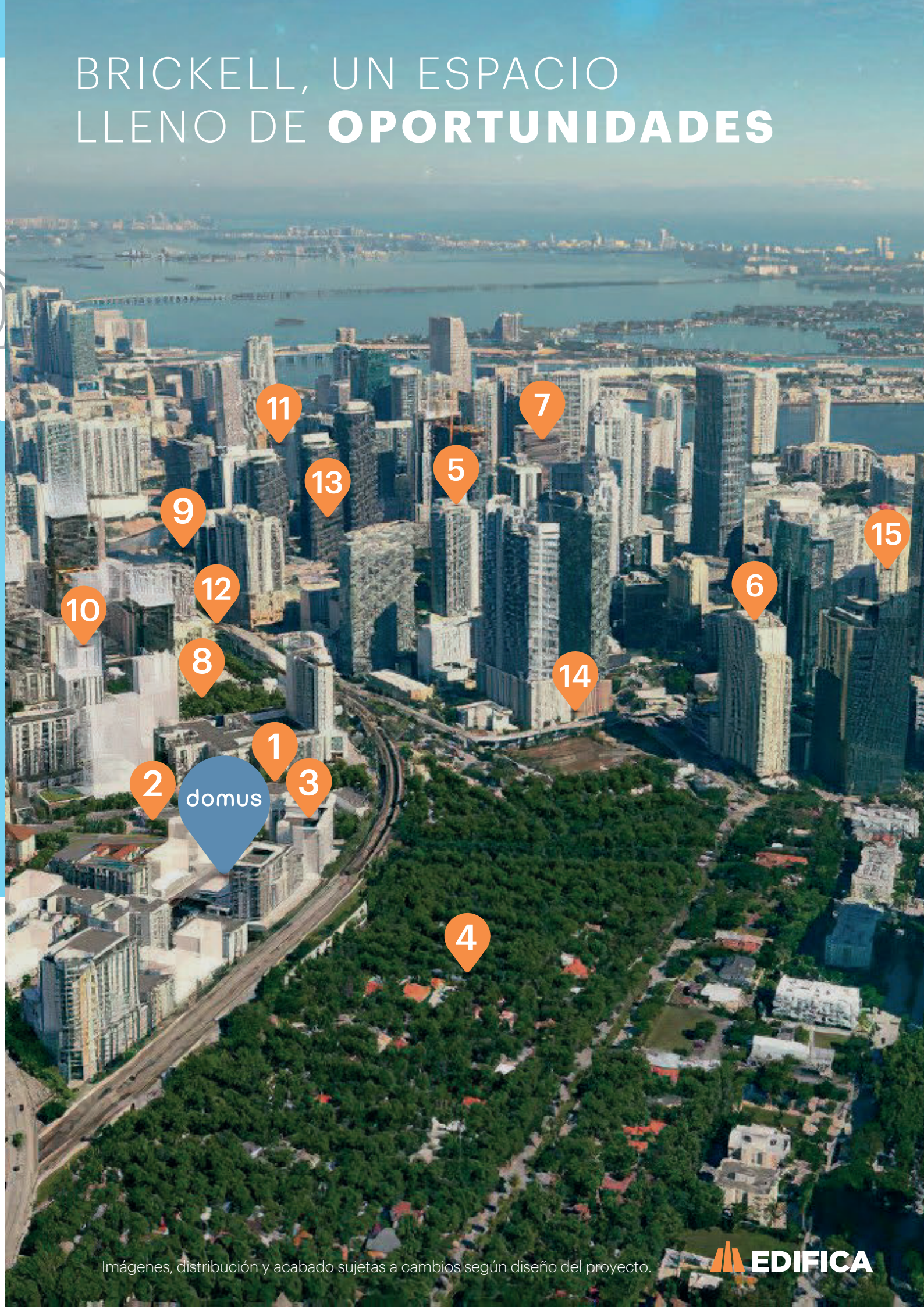




UBICACIÓN PRIVILEGIADA

- | | | |
|-----------------------|----------------------------------|---------------------------|
| 1 Publix Supermarket | 6 Four Seasons Hotel | 11 Riverside Board Walk |
| 2 Walgreens | 7 JW Marriot Hotel | 12 Brickell Train Station |
| 3 Novotel Hotel Miami | 8 South Side Park | 13 Brickell City Center |
| 4 Simpson Park | 9 Shops at Mary Brickell Village | 14 Novecento Bistró |
| 5 SLS Hotel Miami | 10 Indigo Hotel Miami | 15 Osaka Miami |

BRICKELL, UN ESPACIO LLENO DE **OPORTUNIDADES**



Imágenes, distribución y acabado sujetas a cambios según diseño del proyecto.



The way we stay has changed.

Imágenes, distribución y acabado sujetas a cambios según diseño del proyecto.



UN ESPACIO DE ENCUENTRO **EN BRICKELL MIAMI**

171 DEPARTAMENTOS

12 Pisos + Rooftop

Diseñado con un amplio lobby de más de 500 m² que sirve de punto de encuentro para un desayuno casual, un café improvisado, un cóctel o un snack. También cuenta con espacios cómodos internos y al aire libre para reuniones sociales o de negocios.

FIRMAS DE PRIMER NIVEL

ZYSCOVICH
ARCHITECTS

URBAN ROBOT
ASSOCIATES



THORNTON
CONSTRUCTION COMPANY, INC.

ÁREAS COMUNES | **LOBBY**



Reception



Market



Bakery



Coffee



Bar



Garden



“TAKE IT ALL IN BECAUSE WE ARE HERE FOR A **GOOD TIME...**”

ÁREAS COMUNES | **LOBBY**

 Valet Parking

 Bike Parking

 Piscina

 Sauna

 Zona de parrillas

 Wine & Beer bar

 Package room

 Gimnasio

 Yoga & Pilates



ESTUDIO

(UNITS 05, 06, 13 DEL PISO 2 AL 12)

1 BEDROOM

1 BATHROOM

INTERIOR

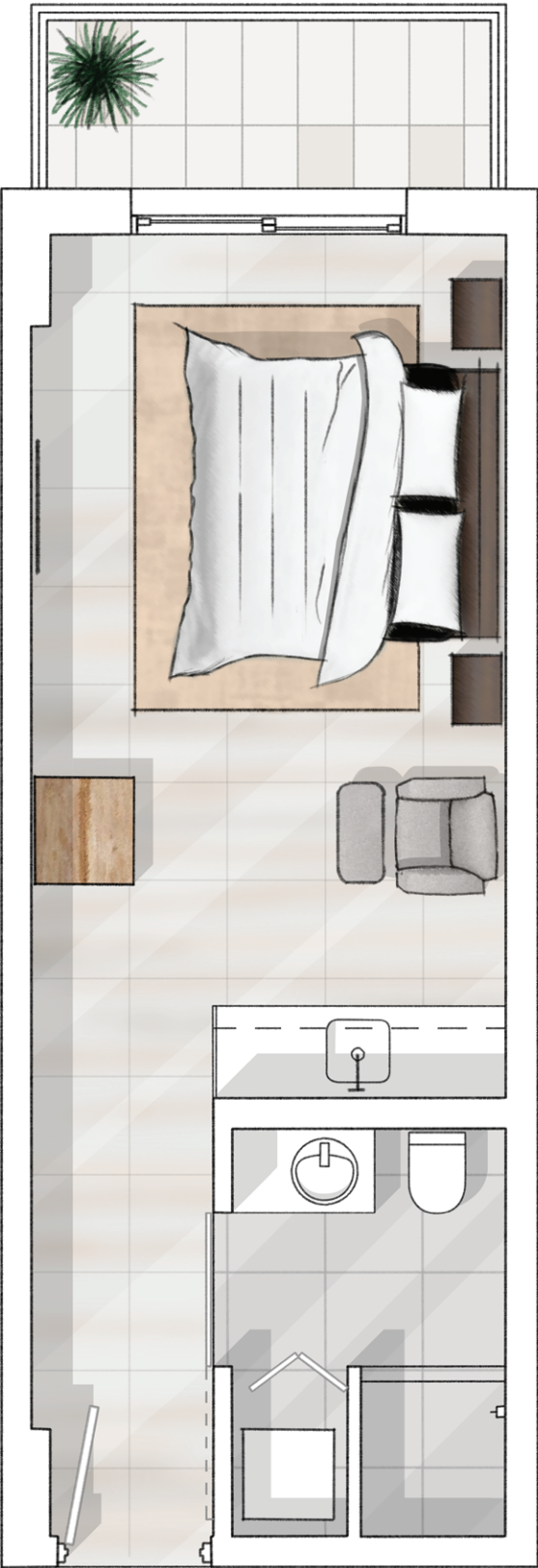
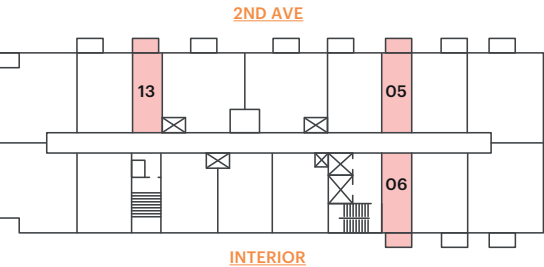
330 SQFT | 30.65 M²

EXTERIOR

41 SQFT | 3.80 M²

TOTAL

371 SQFT | 34.45 M²



ORAL REPRESENTATIONS CANNOT BE RELIED UPON AS CORRECTLY STATING THE REPRESENTATIONS OF THE DEVELOPER. FOR CORRECT REPRESENTATIONS, MAKE REFERENCE TO THIS BROCHURE AND TO THE DOCUMENTS REQUIRED BY SECTION 718.503, FLORIDA STATUTES, TO BE FURNISHED BY A DEVELOPER TO A BUYER OR LESSEE.

Stated dimensions and areas are measured to the exterior boundaries of the exterior walls and the centerline of interior demising walls between units and in fact vary from the dimensions and areas that would be determined by using the description and definition of the "Unit" set forth in the Declaration of Condominium (which generally only includes the interior airspace between the perimeter walls and excludes all structural components and other common elements). For your reference, the area of the Unit, determined in accordance with the description and definition of the "Unit" set forth in Exhibit 1 of the Declaration of Condominium. Terraces and balconies are not part of the Unit. Note that measurements of rooms set forth on this floor plan are generally taken at the greatest points of each given room (as if the room were a perfect rectangle), without regard for any cutouts. Accordingly, the area of the actual room will typically be smaller than the product obtained by multiplying the stated length times width. All dimensions and areas are approximate and may vary based on actual construction, and all floor plans and development plans are subject to change.

1 BED SUITE A

(UNITS 03, 04, 07, 14, 15 DEL PISO 2 AL 12)

1 BEDROOM

1 BATHROOM

INTERIOR

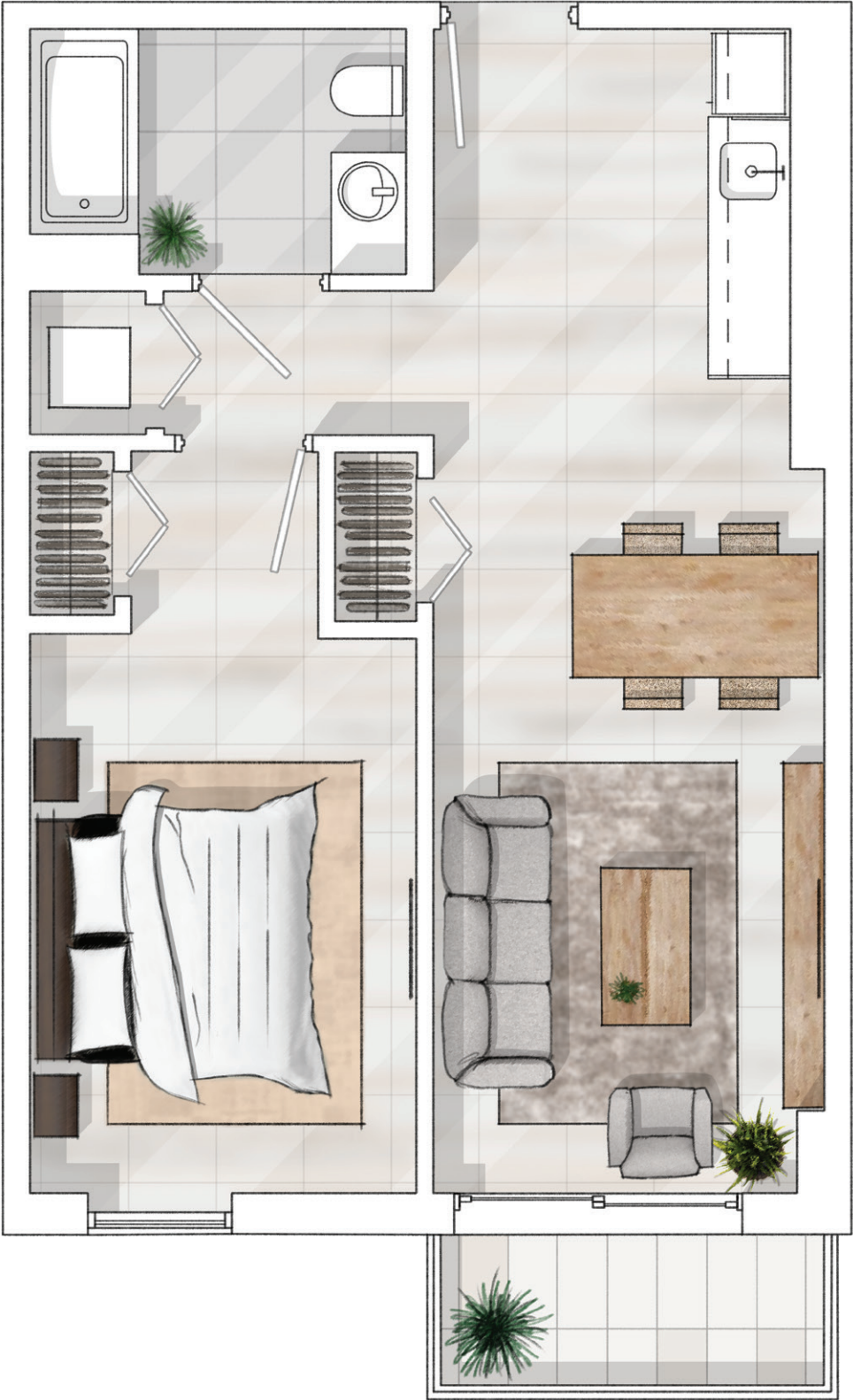
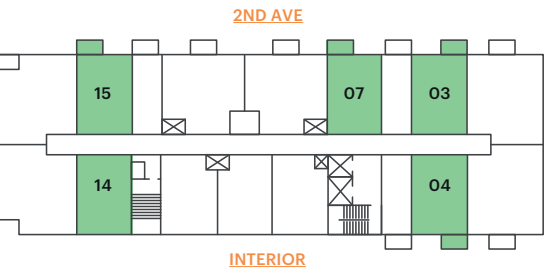
600 SQFT | 57.60 M²

EXTERIOR

40 SQFT | 3.70 M²

TOTAL

640 SQFT | 61.3 M²



ORAL REPRESENTATIONS CANNOT BE RELIED UPON AS CORRECTLY STATING THE REPRESENTATIONS OF THE DEVELOPER. FOR CORRECT REPRESENTATIONS, MAKE REFERENCE TO THIS BROCHURE AND TO THE DOCUMENTS REQUIRED BY SECTION 718.503, FLORIDA STATUTES, TO BE FURNISHED BY A DEVELOPER TO A BUYER OR LESSEE.

Stated dimensions and areas are measured to the exterior boundaries of the exterior walls and the centerline of interior demising walls between units and in fact vary from the dimensions and areas that would be determined by using the description and definition of the "Unit" set forth in the Declaration of Condominium (which generally only includes the interior airspace between the perimeter walls and excludes all structural components and other common elements). For your reference, the area of the Unit, determined in accordance with the description and definition of the "Unit" set forth in Exhibit 1 of the Declaration of Condominium. Terraces and balconies are not part of the Unit. Note that measurements of rooms set forth on this floor plan are generally taken at the greatest points of each given room (as if the room were a perfect rectangle), without regard for any cutouts. Accordingly, the area of the actual room will typically be smaller than the product obtained by multiplying the stated length times width. All dimensions and areas are approximate and may vary based on actual construction, and all floor plans and development plans are subject to change.

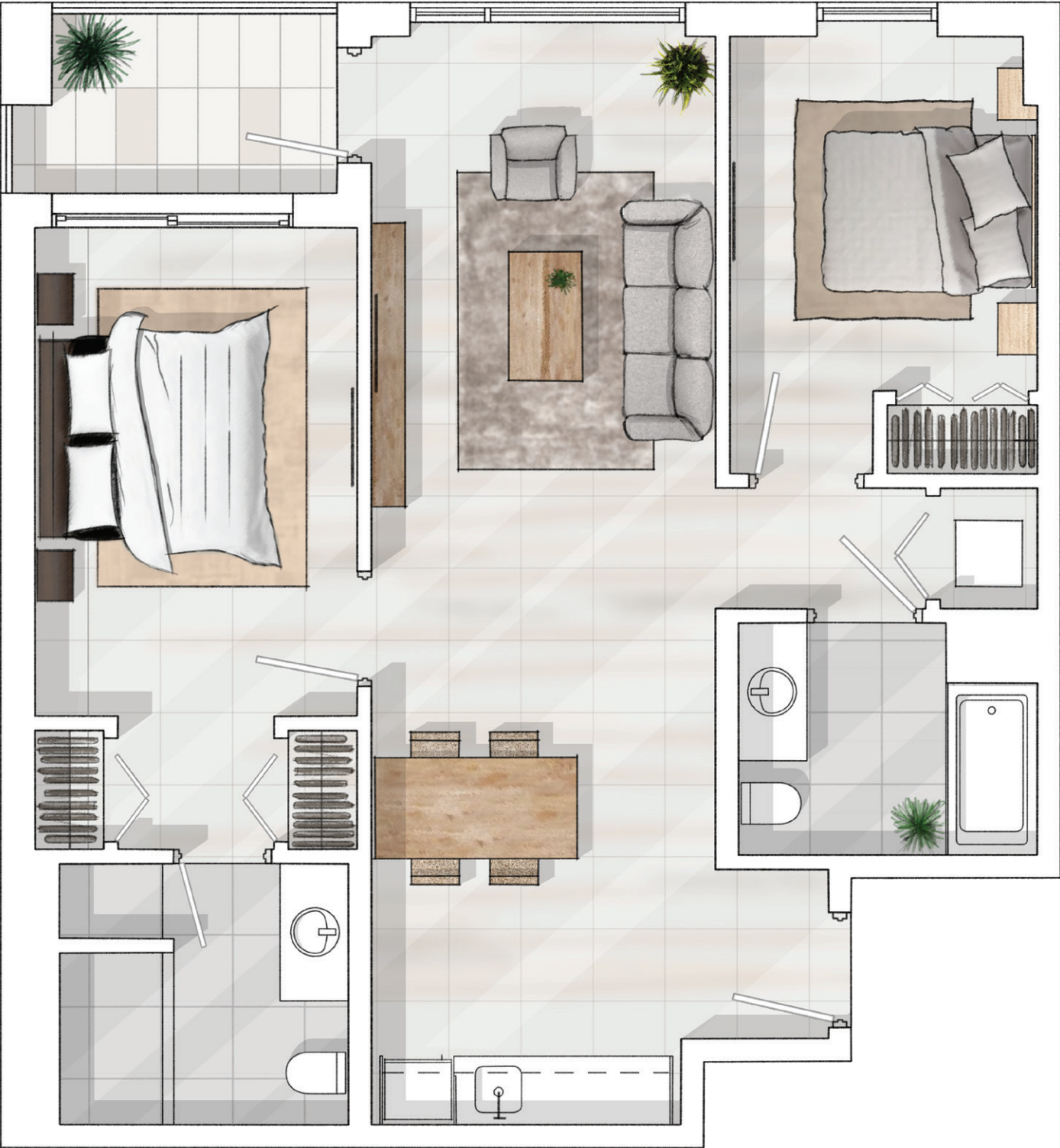
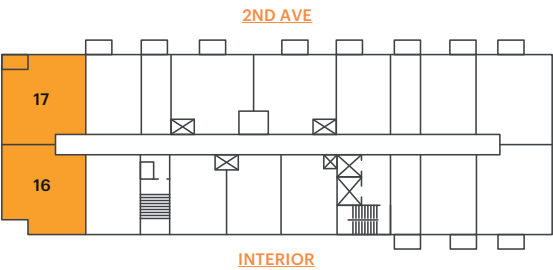
2 BED SUITE B
(UNITS 16, 17 DEL PISO 2 AL 8)

2 BEDROOMS
2 BATHROOMS

INTERIOR
925 SQFT | 85.93 M²

EXTERIOR
54 SQFT | 5.01 M²

TOTAL
979 SQFT | 90.94 M²



ORAL REPRESENTATIONS CANNOT BE RELIED UPON AS CORRECTLY STATING THE REPRESENTATIONS OF THE DEVELOPER. FOR CORRECT REPRESENTATIONS, MAKE REFERENCE TO THIS BROCHURE AND TO THE DOCUMENTS REQUIRED BY SECTION 718.503, FLORIDA STATUTES, TO BE FURNISHED BY A DEVELOPER TO A BUYER OR LESSEE.

Stated dimensions and areas are measured to the exterior boundaries of the exterior walls and the centerline of interior demising walls between units and in fact vary from the dimensions and areas that would be determined by using the description and definition of the "Unit" set forth in the Declaration of Condominium (which generally only includes the interior airspace between the perimeter walls and excludes all structural components and other common elements). For your reference, the area of the Unit, determined in accordance with the description and definition of the "Unit" set forth in Exhibit 1 of the Declaration of Condominium. Terraces and balconies are not part of the Unit. Note that measurements of rooms set forth on this floor plan are generally taken at the greatest points of each given room (as if the room were a perfect rectangle), without regard for any cutouts. Accordingly, the area of the actual room will typically be smaller than the product obtained by multiplying the stated length times width. All dimensions and areas are approximate and may vary based on actual construction, and all floor plans and development plans are subject to change.

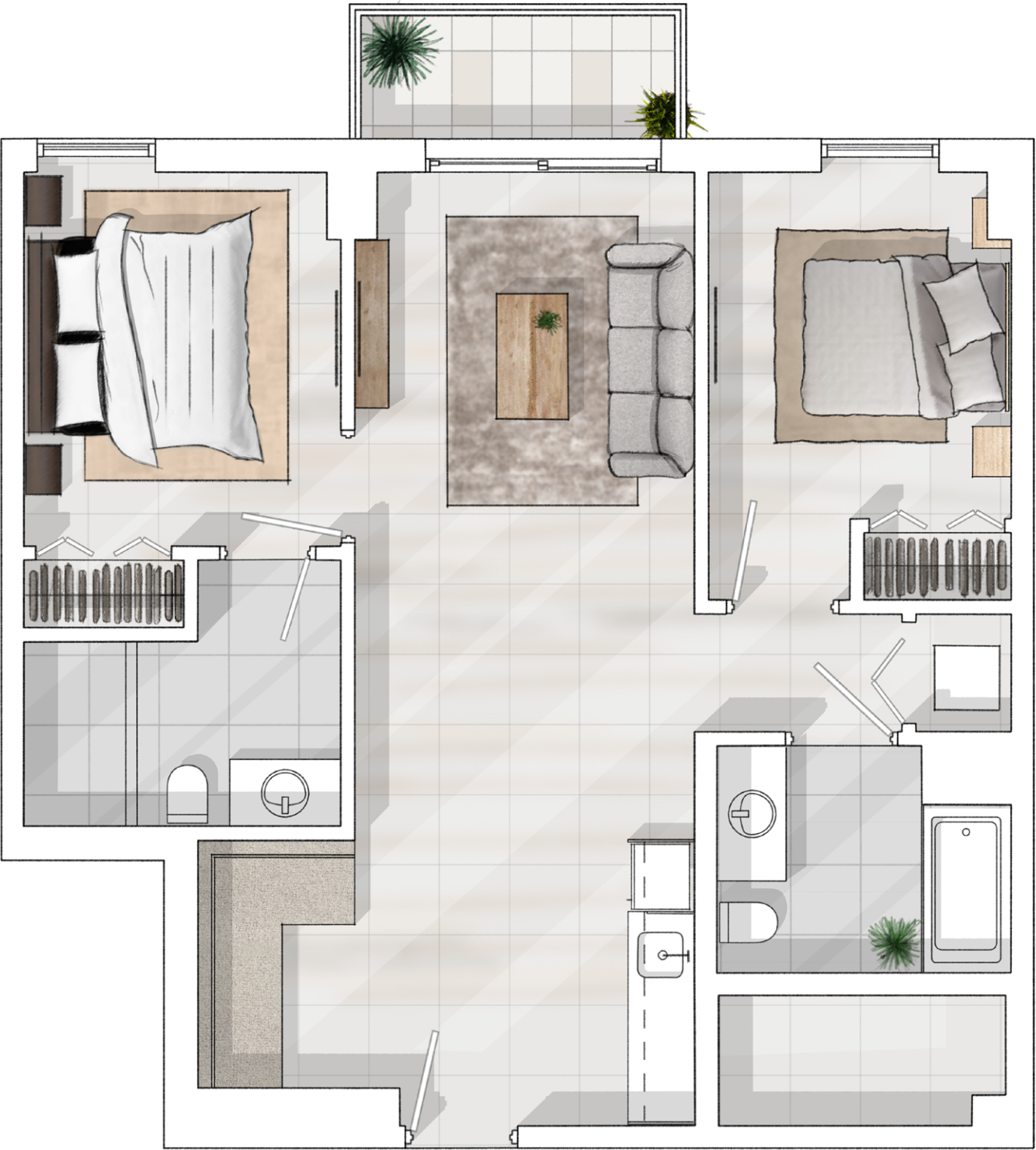
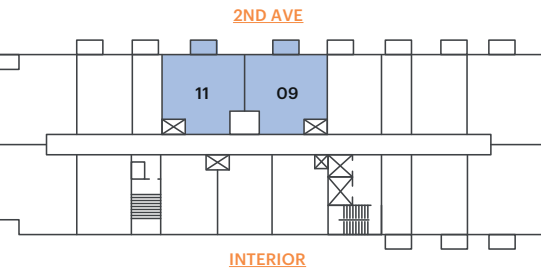
2 BED SUITE A
(UNITS 09, 11 DEL PISO 2 AL 12)

2 BEDROOMS
2 BATHROOMS

INTERIOR
803 SQFT | 74.60 M²

EXTERIOR
50 SQFT | 4.64 M²

TOTAL
853 SQFT | 79.24 M²



ORAL REPRESENTATIONS CANNOT BE RELIED UPON AS CORRECTLY STATING THE REPRESENTATIONS OF THE DEVELOPER. FOR CORRECT REPRESENTATIONS, MAKE REFERENCE TO THIS BROCHURE AND TO THE DOCUMENTS REQUIRED BY SECTION 718.503, FLORIDA STATUTES, TO BE FURNISHED BY A DEVELOPER TO A BUYER OR LESSEE.

Stated dimensions and areas are measured to the exterior boundaries of the exterior walls and the centerline of interior demising walls between units and in fact vary from the dimensions and areas that would be determined by using the description and definition of the "Unit" set forth in the Declaration of Condominium (which generally only includes the interior airspace between the perimeter walls and excludes all structural components and other common elements). For your reference, the area of the Unit, determined in accordance with the description and definition of the "Unit" set forth in Exhibit 1 of the Declaration of Condominium. Terraces and balconies are not part of the Unit. Note that measurements of rooms set forth on this floor plan are generally taken at the greatest points of each given room (as if the room were a perfect rectangle), without regard for any cutouts. Accordingly, the area of the actual room will typically be smaller than the product obtained by multiplying the stated length times width. All dimensions and areas are approximate and may vary based on actual construction, and all floor plans and development plans are subject to change.



NORTH
DEVELOPMENT

domus

BRICKELL PARK



941 218 341
grisco@edifica.com.pe

